


# **MEASURE Q UPDATE**

OCTOBER 7, 2015

# **DESIGN BUILD PROCESS WHERE WE'VE BEEN**

- 1. Selected Construction Manager**
  - 2. Selected Criteria Architect**
  - 3. Met With Users**
  - 4. Prequalified Design Build Teams**
  - 5. Developed Criteria Documents**
  - 6. Request for Proposal**
  - 7. Selected Design Build Team to Provide Best Value to District**
- 

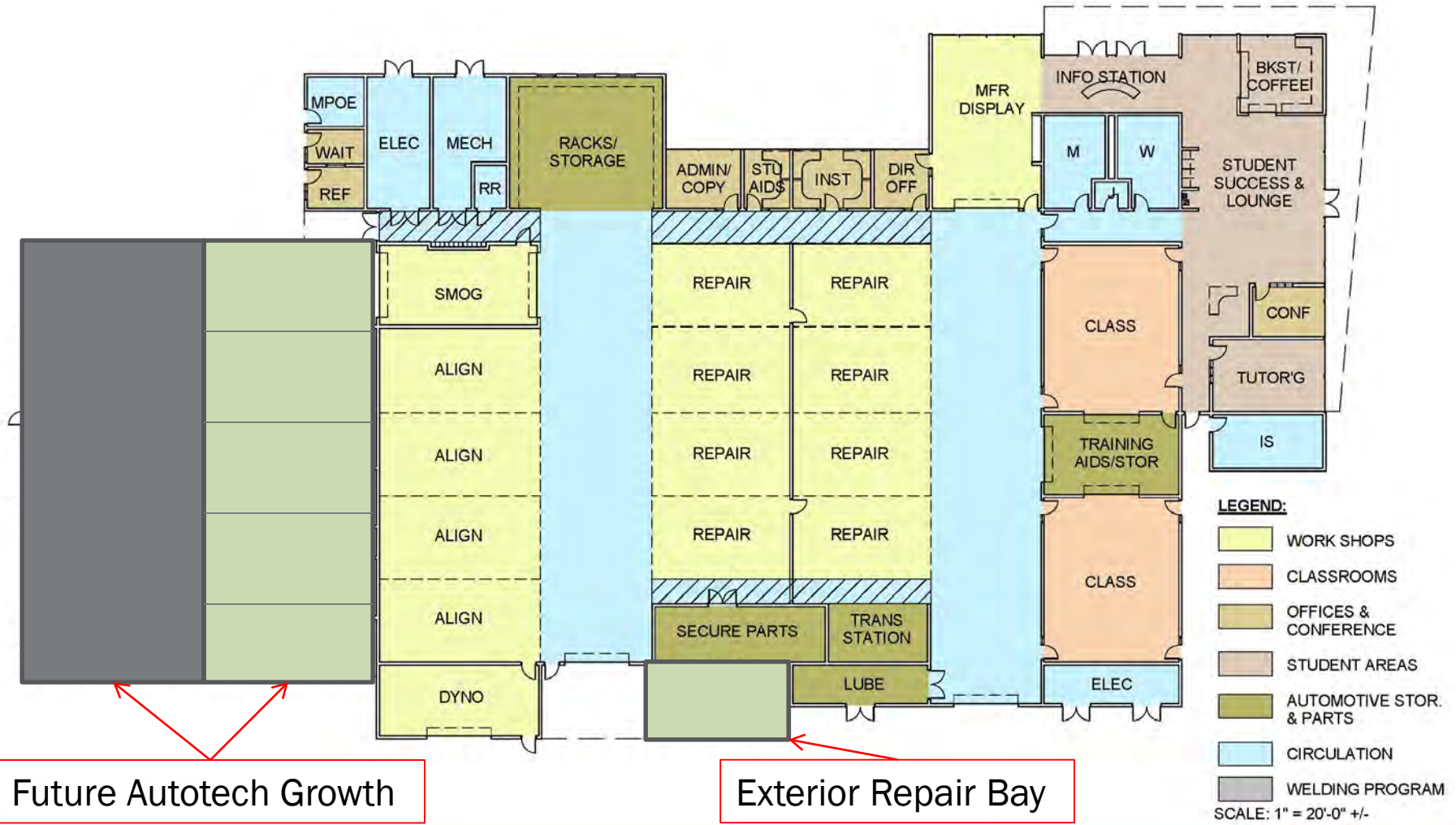
# **DESIGN BUILD PROCESS WHERE WE ARE NOW**

- 1. Design Confirmation – Improvements on Criteria Documents**
  - 2. Construction Documents**
  - 3. Division of the State Architect – DSA –  
Incremental Submissions**
  - 4. Construction**
  - 5. Commissioning**
  - 6. Close Out**
- 



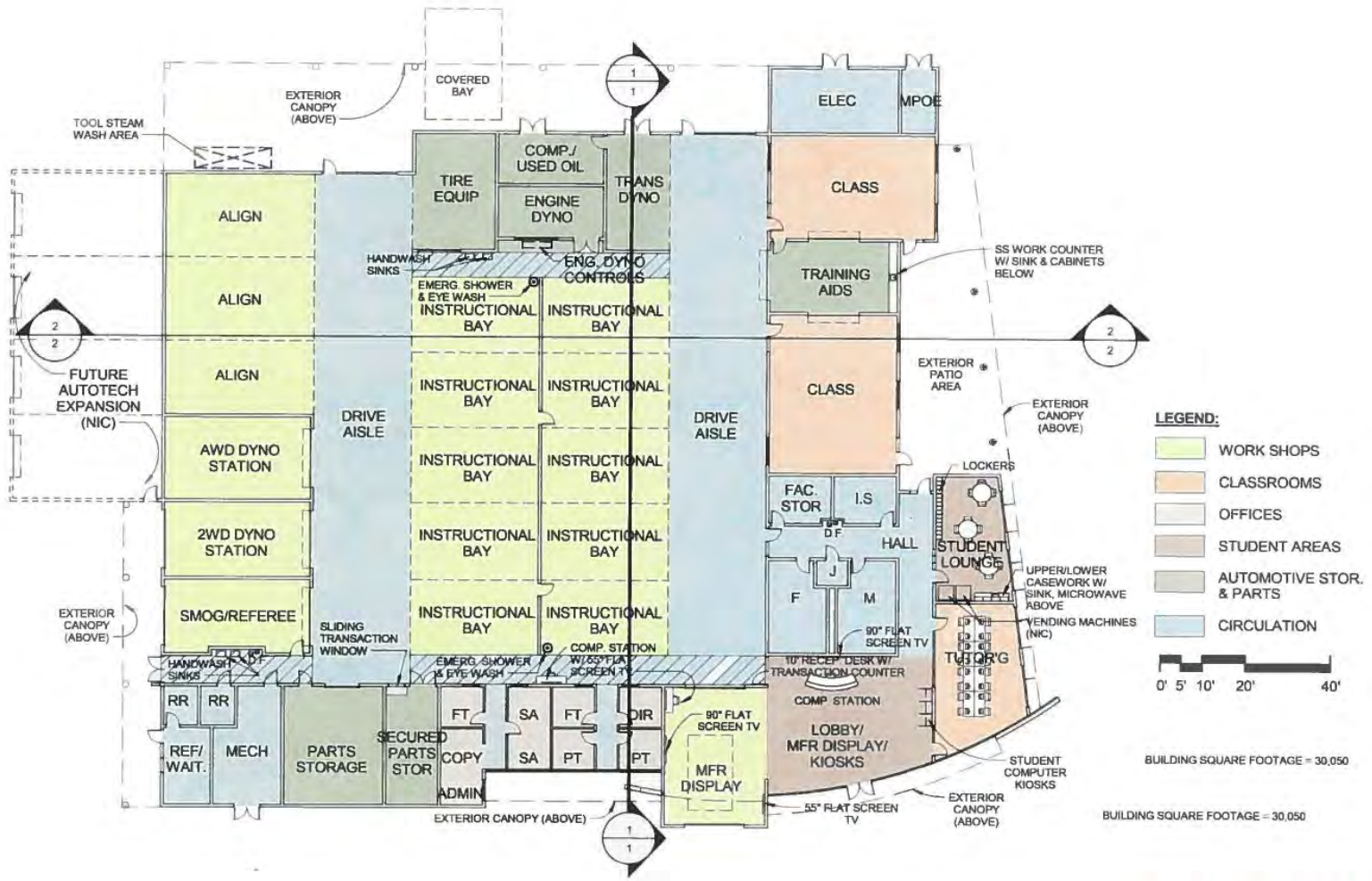
**AUTOTECHNOLOGY  
PROJECT**

From February Board Presentation:



Future Autotech Growth

Exterior Repair Bay



# PROGRAMMING PLAN

# AUTOTECHNOLOGY DESIGN / BUILD TEAM

**Clark & Sullivan Construction**

Sean Burnie, Project Executive

**JK Architecture**

Chris Vicencio, Project Architect

**AUTOTECHNOLOGY BUILDING**

# Auto Technology Building

Solano Community College | Vallejo

1



*A 20 year legacy of success*



# Site Plan

## Campus Enrichment

- 1. Monument Sign
- 2. Campus Entry
- 3. Parking & Landscape
- 4. Secure Parking
- 5. Promenade
- 6. Event Space
- 7. Outdoor Learning Area
- 8. Future Parking
- 9. Future Building Site
- 10. Future Service Access

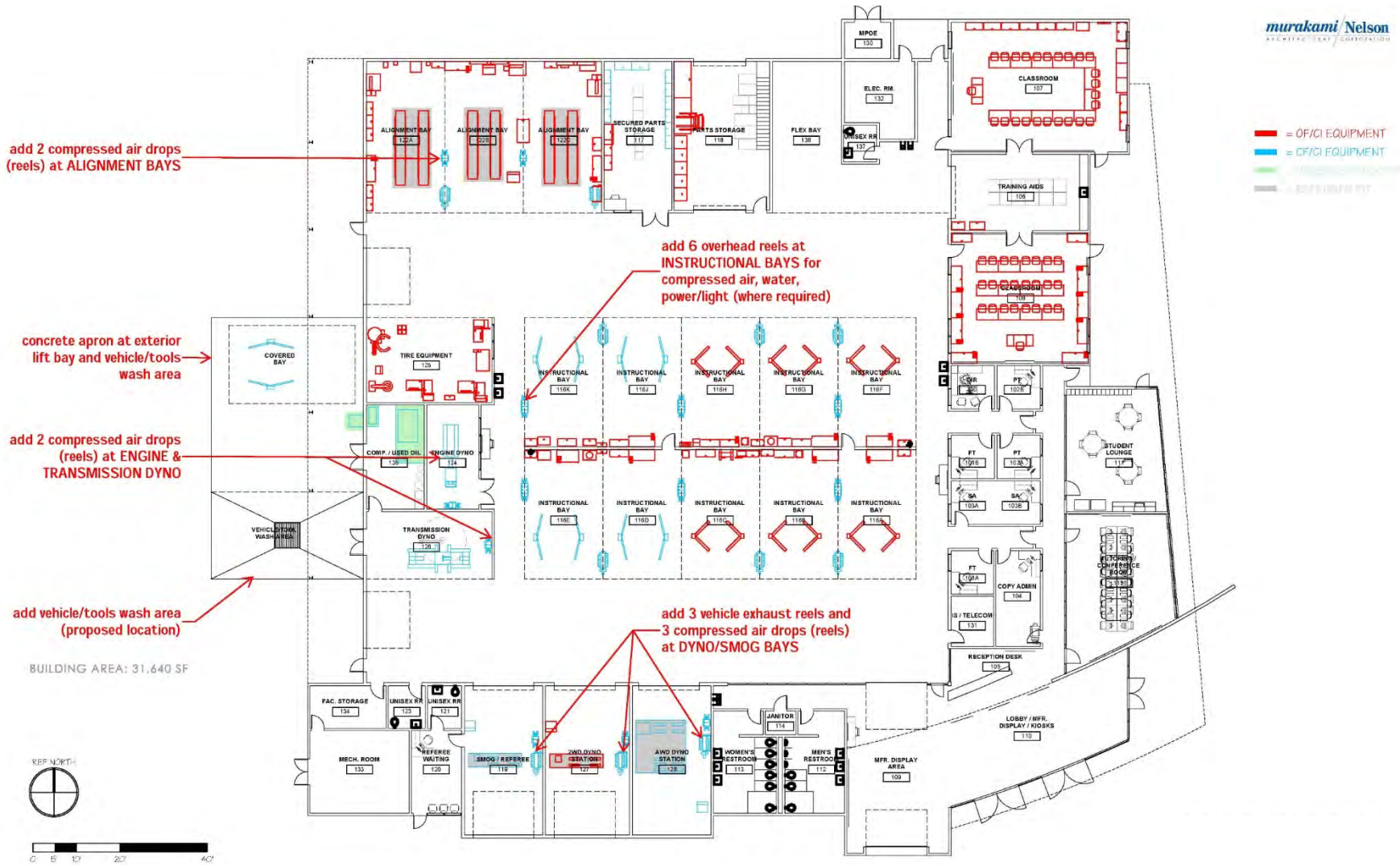


Site Plan



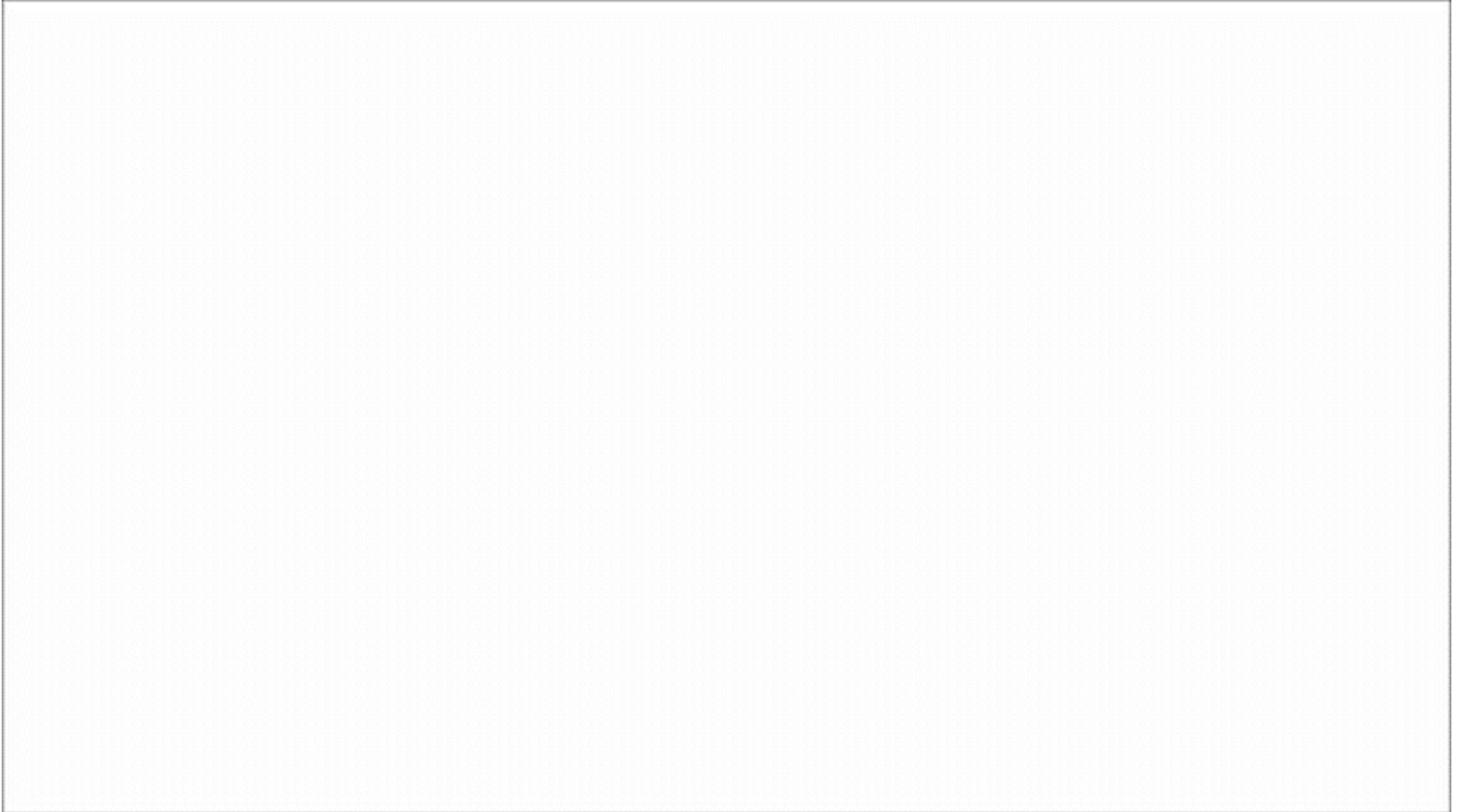


# Equipment Plan



**Equipment Plan**

# Fly-Through Video



## **3D Flythrough Video**

Community Engagement - Program Pride - Manufacturer Partnerships & Sponsorships

# Auto Technology Building

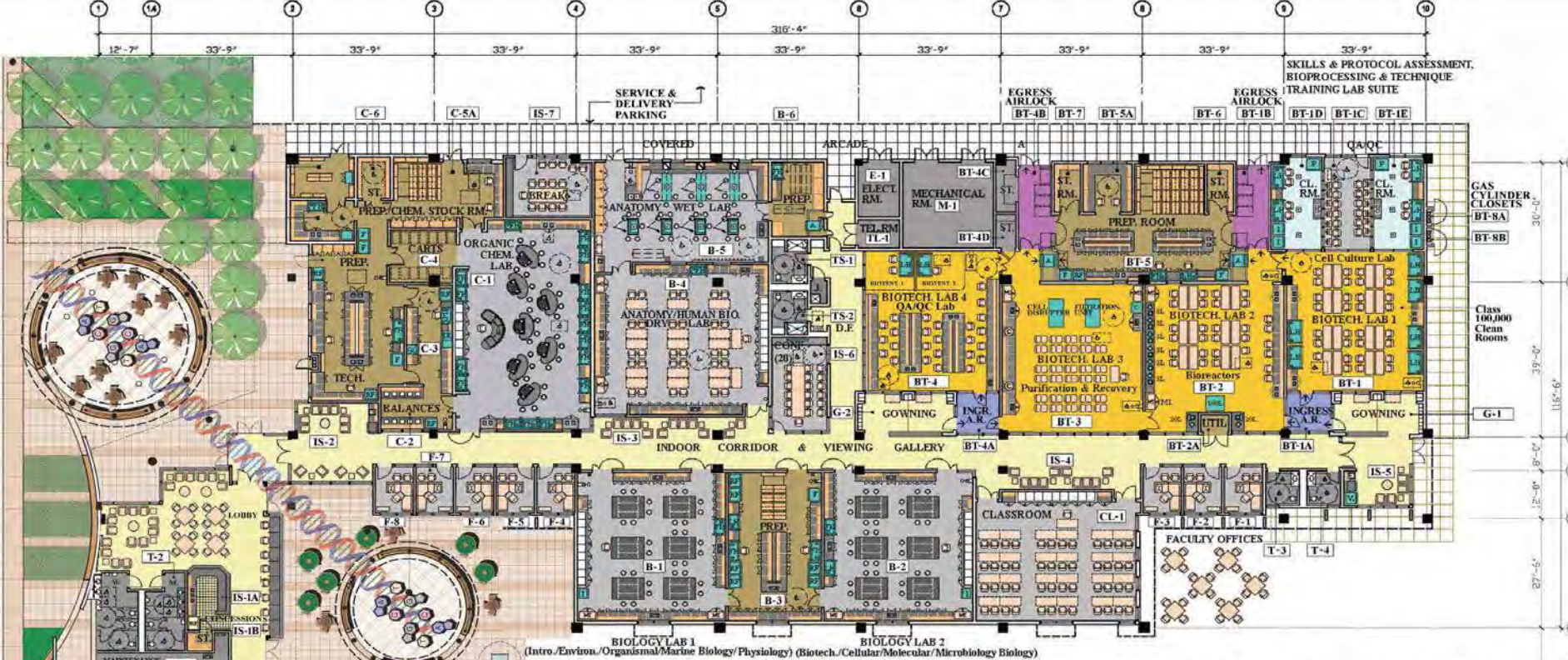
Solano Community College | Vallejo

6



*A 20 year legacy of success*

**BIOTECHNOLOGY & SCIENCE  
PROJECT**



BIOLOGY LAB 1 (Intro./Environ./Organismal/Marine Biology/Physiology) (Biotech./Cellular/Molecular/Microbiology Biology)

- COLOR LEGEND:**
- INDOOR TRANSITIONAL SPACES
  - BIOTECH. BIO-PROCESSING LABS
  - BIOTECH. INGRESS ANTEROOMS
  - BIOTECH. CLEAN ROOMS
  - BIOTECH. EGRESS AIRLOCKS
  - CLASSRMS., TEACHING LABS, OFFICES / OFFICE SUPPORT
  - PREP. ROOMS, TECHS. & LAB SUPPORT SPACES
  - WALL-HUNG UPPER CABTS., FULL HT. CABTS. & SHELVINGS
  - COUNTERTOPS WITH BASE CABTS., DRAWERS & KNEE SPACES
  - FIXED LAB EQUIPMENT
  - MOVABLE FFE (Furniture, Furnishings & Equipment)
  - EXISTING V.C. CHEMISTRY TEACHING LAB
  - EXISTING V.C. BIOLOGY TEACHING LAB
  - EXISTING V.C. PREP./LAB SUPPORT LAB
  - EXISTING V.C. CLASSROOMS

**BUILDING ORGANIZATION**  
(Of Fixed Equipment, Cabts., Shelving & Movable FFE)

**SK-7AR4**



**31,976 GSF**



**LINEAR 1-STORY CONCEPT - NORTH OF (E) VACAVILLE CENTER**

# BIOTECHNOLOGY & SCIENCE DESIGN / BUILD TEAM

- Rudolph & Sletten
- Kyle Glankler, Project Manager
  
- **The Smith Group**
- Irene Morris, Project Architect



BIOTECHNOLOGY & SCIENCE BUILDING



# Opportunities for Innovation

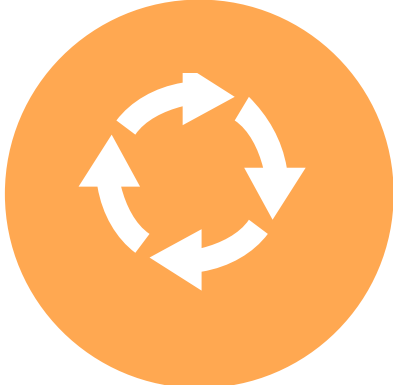
Chemistry Lab & Biotechnology Showcase



Entry Design & Community Space



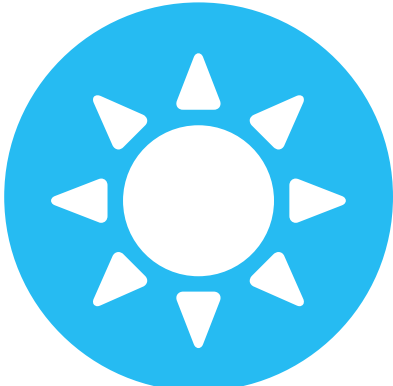
Enhanced Circulation / Gathering / Interaction



Column Free Spaces



Classroom/Laboratory Daylighting



# Enhancements

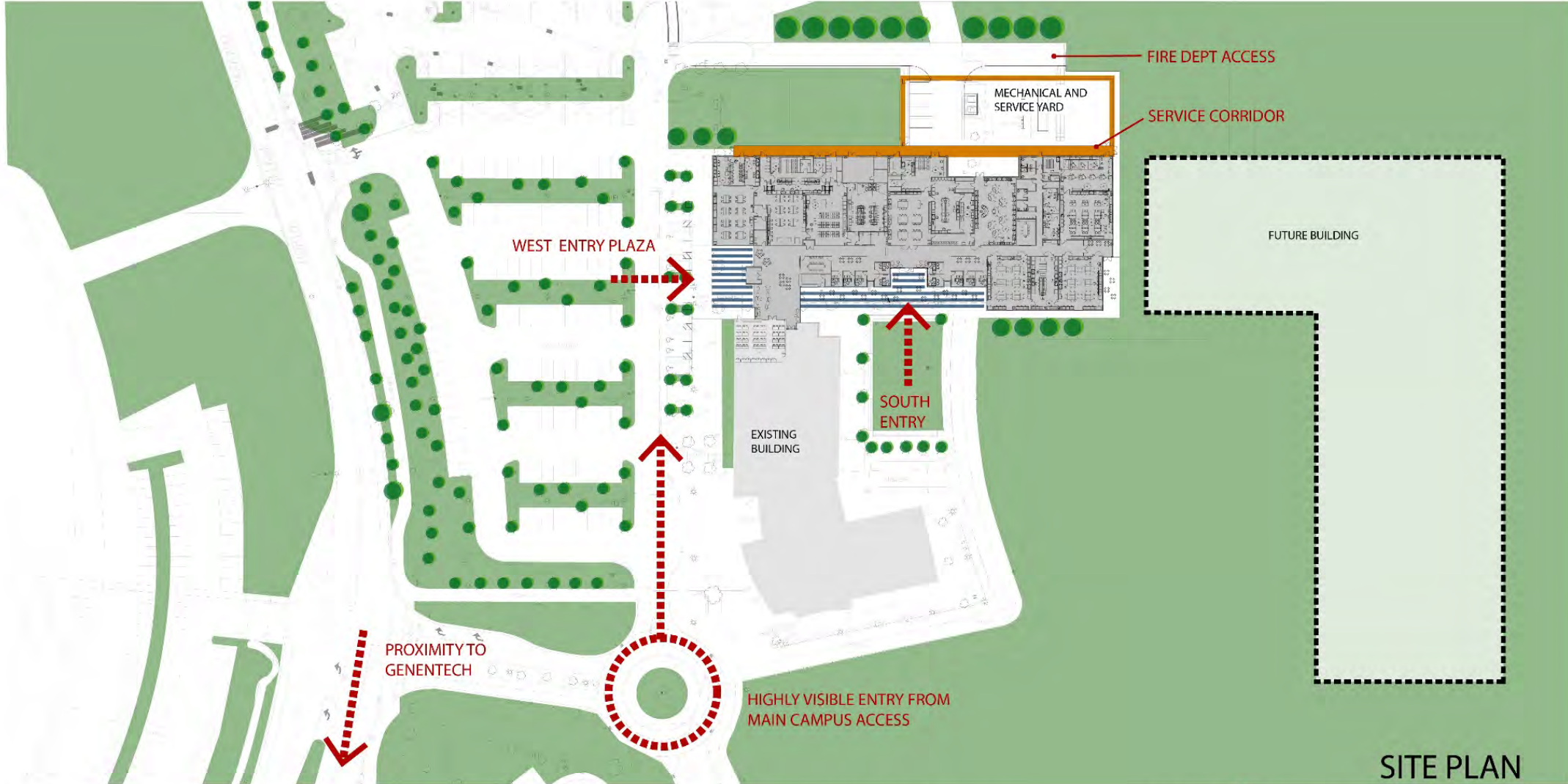
---

- ❑ Added two (2) faculty offices
  - ❑ Compression of the construction schedule
  - ❑ New general chemistry lab
  - ❑ New classroom location
  - ❑ “Grand Entry” experience
  - ❑ Solar shading and outdoor occupant comfort
  - ❑ Education and Science on display
  - ❑ Interaction spaces outside each cluster of faculty offices
-

# Site

## CAMPUS CONNECTIVITY

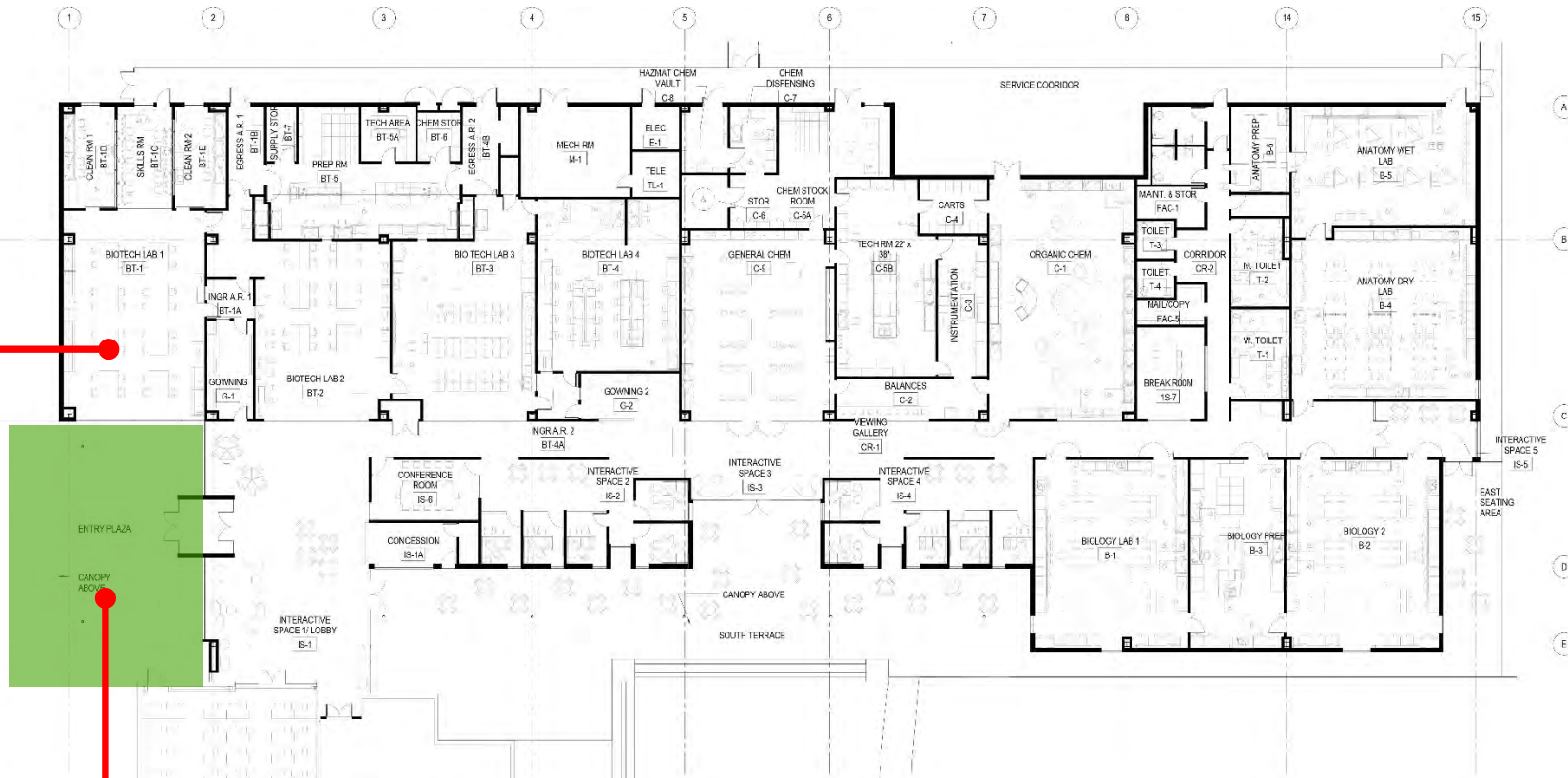
The Building Integrates with the existing Vacaville Center to create a “sense of campus”. The main entrance is highlighted by an inviting shaded entry plaza and a light filled lobby that acts as a link between the west side of the campus and the North Campus Quad. An additional shaded entrance on the south side connects the building directly to the North Campus Quad.



# Floor Plan



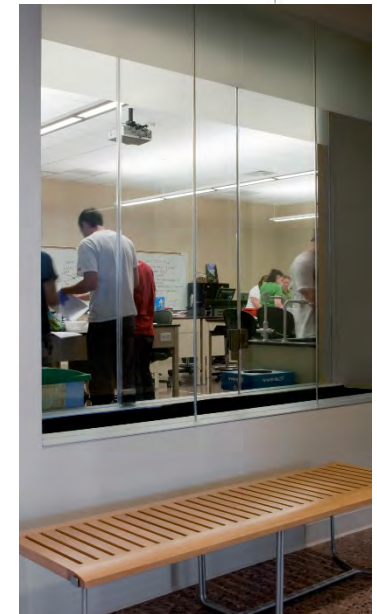
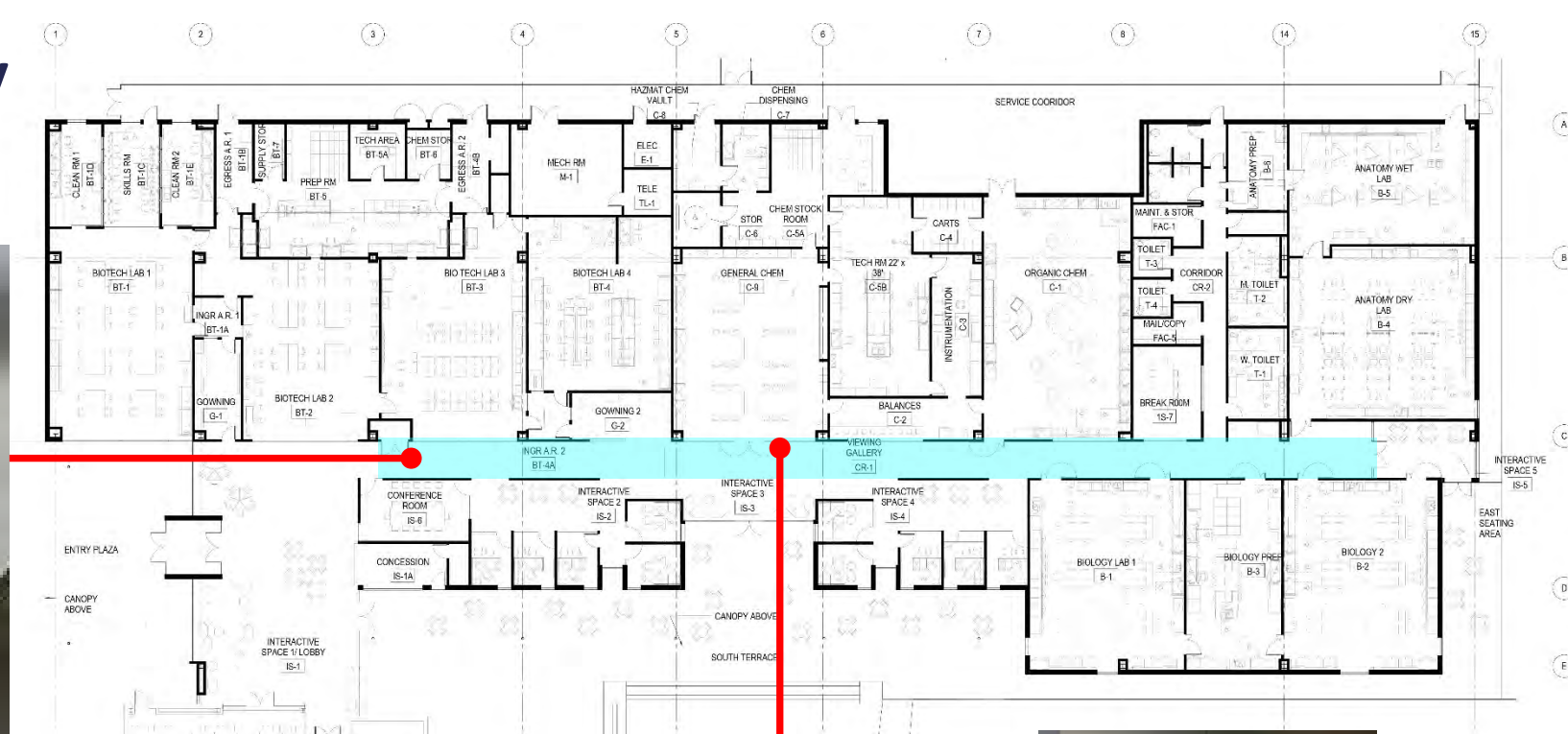
# The Entry Plaza



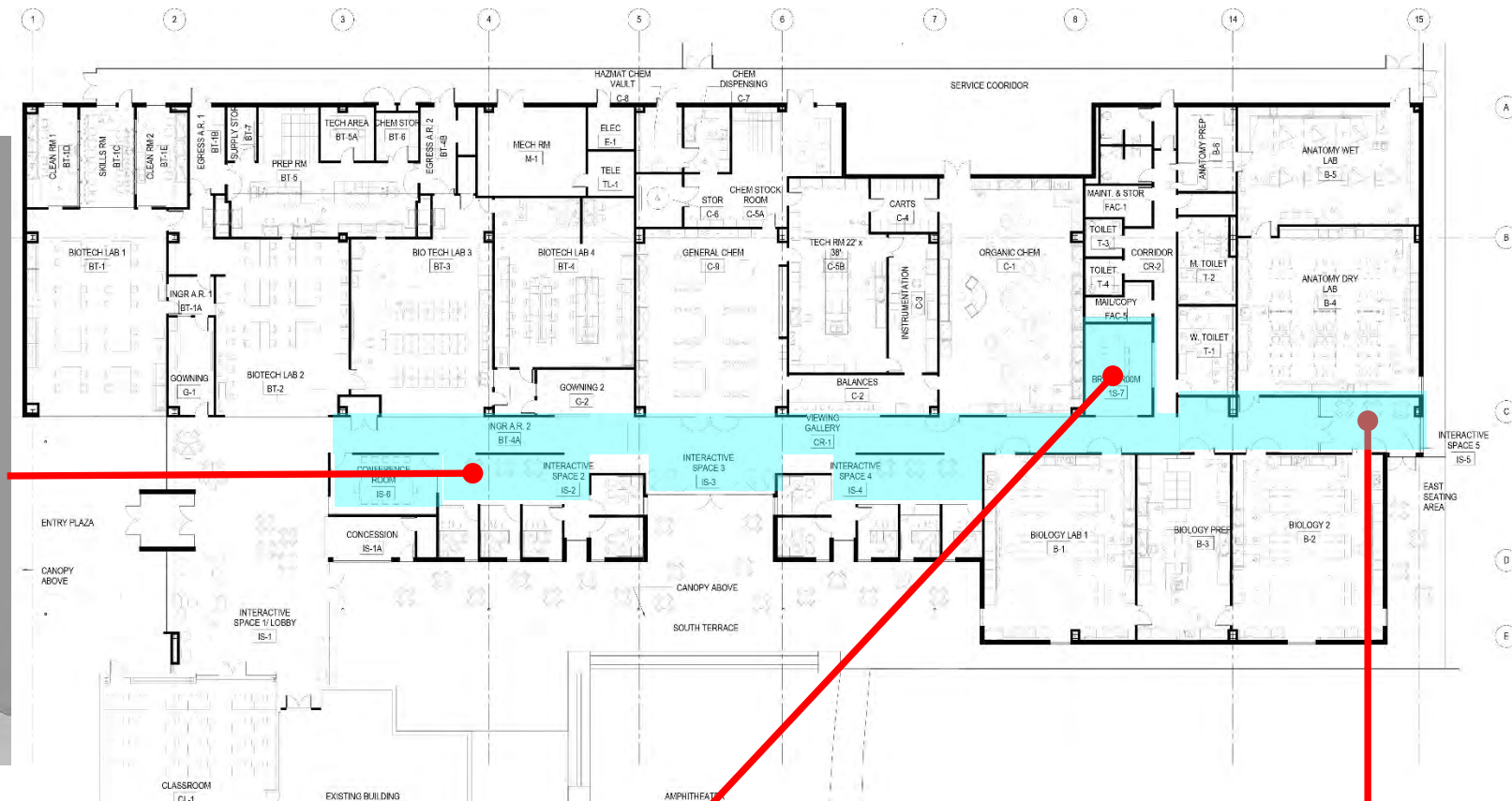
# The Lobby



# The Viewing Gallery



# Interaction Areas







# The Labs: Science on Display



The General Chemistry Lab is showcased behind large glazed partitions, placing "Science on Display" on the North Campus Quad



RENDERING 1

On the south side of the Entry Plaza, the Biotechnology Lab reveals the new Biotechnology & Science Building's academic programs.



RENDERING 2

The Viewing Gallery is a high-ceiling open space flooded with natural light. Along the south side, the Viewing Gallery widens to accommodate interaction areas outside the cluster of faculty offices.



RENDERING 3

On the north side of the Entrance Lobby, a large glazed partition reveals the Bioreactor Lab, showcasing its complex equipment.



RENDERING 4

The Multipurpose Classroom is visually and physically connected to the Entrance Lobby. The Entrance lobby provides an overflow space for the classroom's special academic programs



RENDERING 5

The General Chemistry Lab is showcased behind large glazed partitions, placing "Science on Display" on the North Campus Quad.



RENDERING 6

The South terrace is a long arcaded space that overlooks the North Campus Quad. The South Terrace can function as an exterior Classroom.



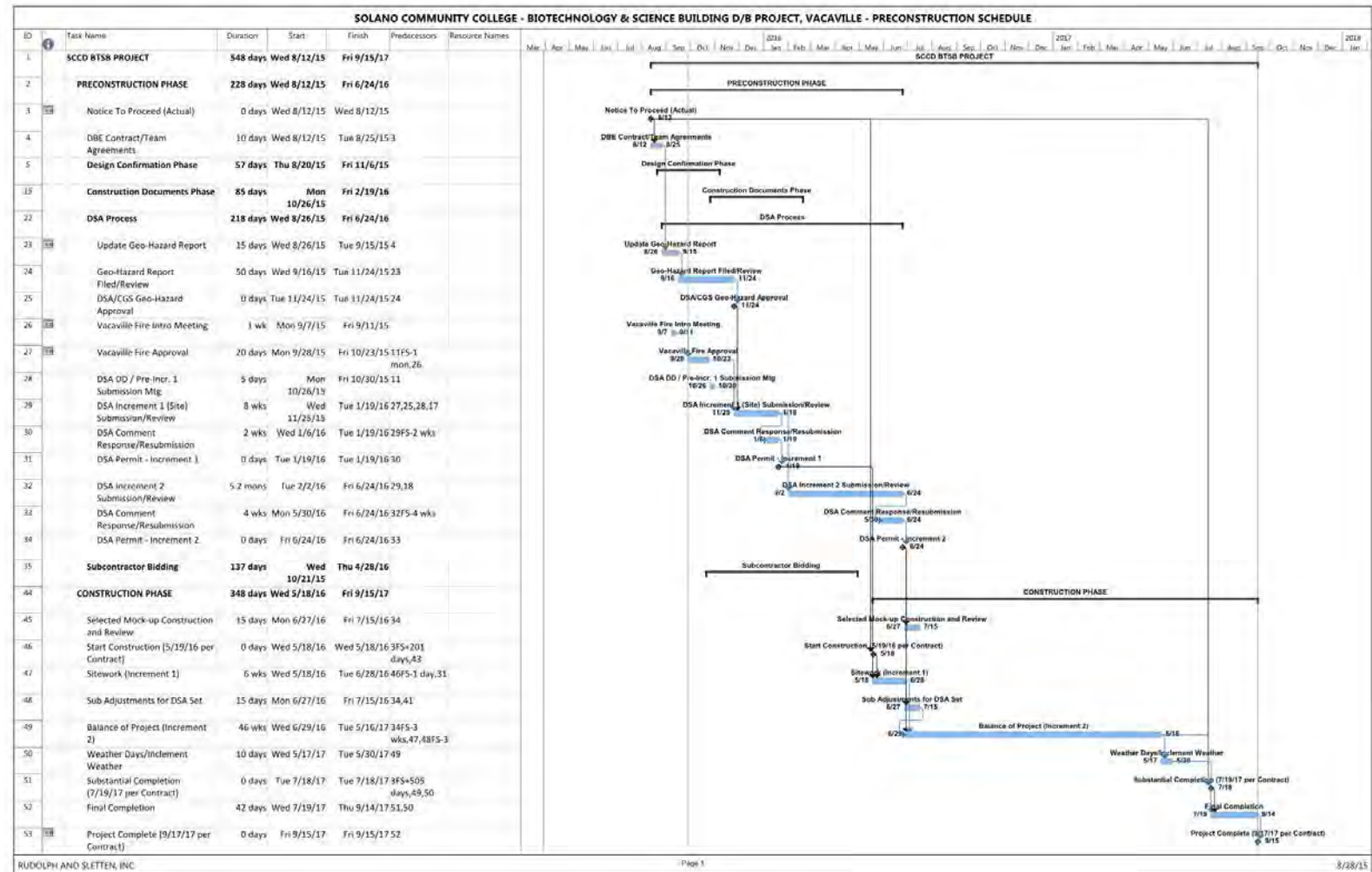


RENDERING 7

The Building's main entrance is highlighted by an inviting shaded Entry Plaza and a light filled high-bay Entrance Lobby, which together create a "Grand Entrance" to the Building.

# Schedule – Key Dates

- ❑ Design Confirmation 11/6/15
- ❑ Construction Document Completion 2/19/16
- ❑ Phased DSA Submission
  - Increment 1 – Site 11/25/15
  - Increment 2 – Balance 1/19/16
- ❑ Subcontractor Outreach and Bidding 10/21/15 – 4/18/16
- ❑ Construction 5/18/16 – 7/18/17
- ❑ Final Completion 9/14/17






# Solano Community College District

---

SMALL, LOCAL AND DIVERSE BUSINESS PROGRAM

## SMALL, LOCAL AND DIVERSE BUSINESS (SLDB) PROGRAM

### PURPOSE:

- The SLDB Program is to ensure inclusion of Solano County businesses in contracting opportunities generated by the Measure Q Bond Program
  - Seeks local, small, minority-owned, woman-owned and/or veteran owned contractors and suppliers for participation on the Measure Q Bond Program
- 


## SMALL, LOCAL AND DIVERSE BUSINESS (SLDB) PROGRAM

### Important Details:

- Two year pilot program, first of it's kind in Solano County
- Participation goal of 15% total contract value
  - Per Project Participation Goal for Large Projects
  - Overall Participation Goal for Small Projects

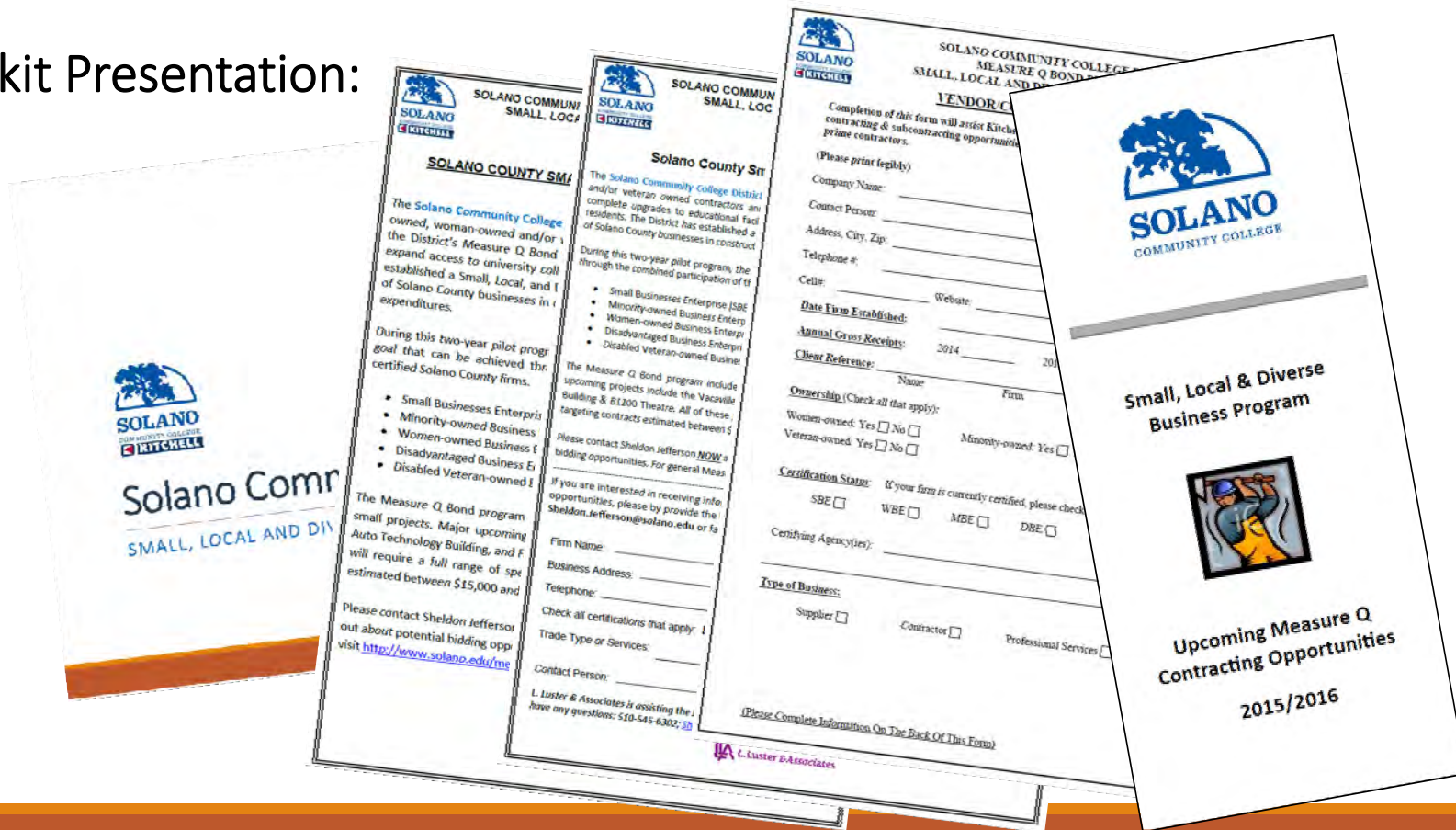
## SMALL, LOCAL AND DIVERSE BUSINESS (SLDB) PROGRAM

### General Program Outreach Efforts:

- Hosted Outreach Kickoff Event July 9, 2015
  - Created Upcoming Contracting Opportunities Brochure
  - Created Outreach Tracking Matrix to track and report on outreach efforts
  - Created Toolkit to educate contracting community about program participation
- 

# SMALL, LOCAL AND DIVERSE BUSINESS (SLDB) PROGRAM

## Toolkit Presentation:



## SMALL, LOCAL AND DIVERSE BUSINESS (SLDB) PROGRAM


### General Program Outreach Efforts:

- Provided Toolkits and Brochures to local organizations
  - Small Business Development Center (SBDC)
  - Local Trades Councils
- Promoted our program at other local events



## SMALL, LOCAL AND DIVERSE BUSINESS (SLDB) PROGRAM

### Building 1200 Renovation Outreach Efforts:

- First Large Project of SLDB Outreach Program
  - Specific outreach to existing certified DBE, MBE, WBE, SBE & DVBE firms
  - Attended Building 1200 pre-bid job walks
    - Added general contractors and subcontractors to outreach list
  - Assisted in connecting SLDB firms with bidders
- 

## SMALL, LOCAL AND DIVERSE BUSINESS (SLDB) PROGRAM


### Building 1200 Bid Results And Participation:

- Four Bids Received
- Only subcontractors with contract value greater than ~\$70,000 are listed
- Full evaluation at project completion

Total	81 Listed	6 DBE	4 MBE	0 WBE	28 SBE	1 DVBE
Local	11 Listed	0 DBE	0 MBE	0 WBE	7 SBE	0 DVBE

## SMALL, LOCAL AND DIVERSE BUSINESS (SLDB) PROGRAM

### Program Outreach Efforts Next Steps:

- Developing Workshops with SBDC
  - Partnering with Solano County agencies for collaborative outreach events
  - Distribution of regularly updated Upcoming Projects Brochure
  - Creation of searchable SLDB Database
  - Ongoing tracking of outreach efforts, program participation and results
- 



For more information please visit  
Solano Community College Measure Q website  
[www.solano.edu/measureq](http://www.solano.edu/measureq)

SMALL, LOCAL AND DIVERSE BUSINESS PROGRAM